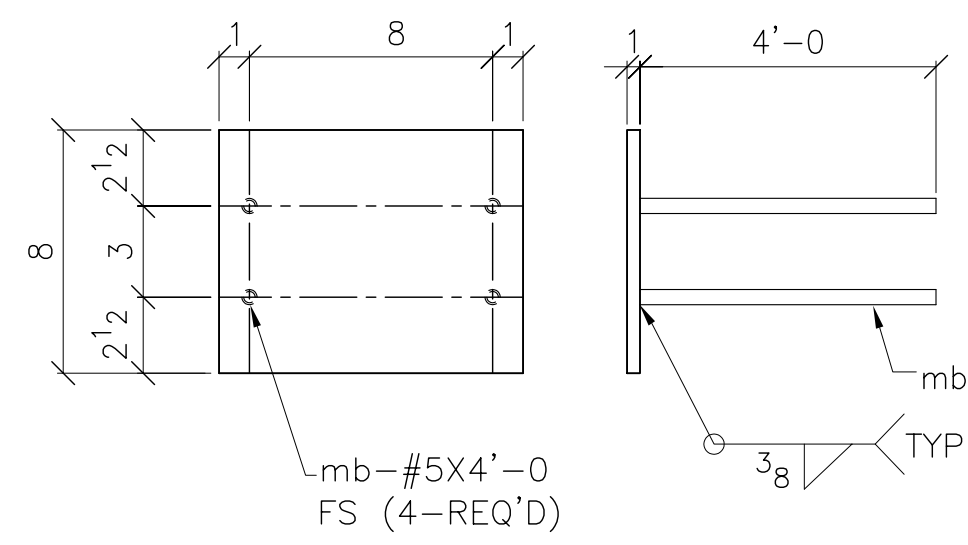
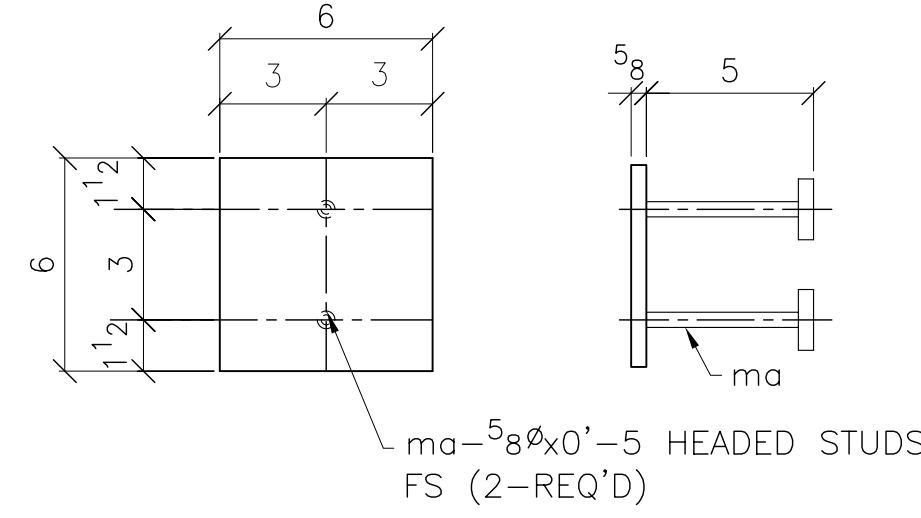


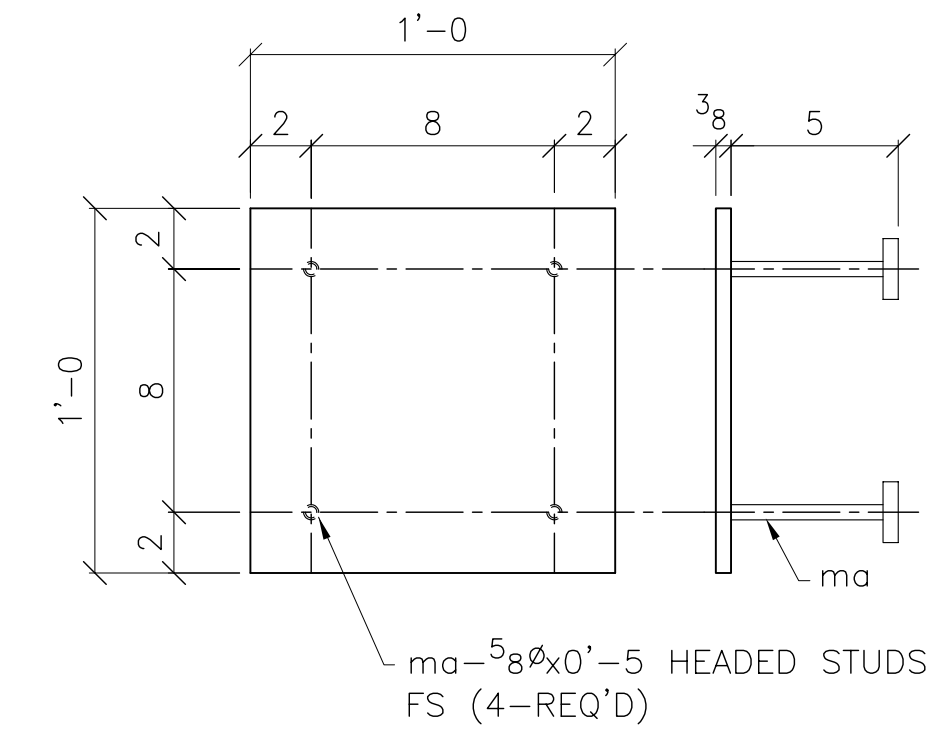
1A-R<sup>1</sup>2x8x0'-8-2 REQ'D



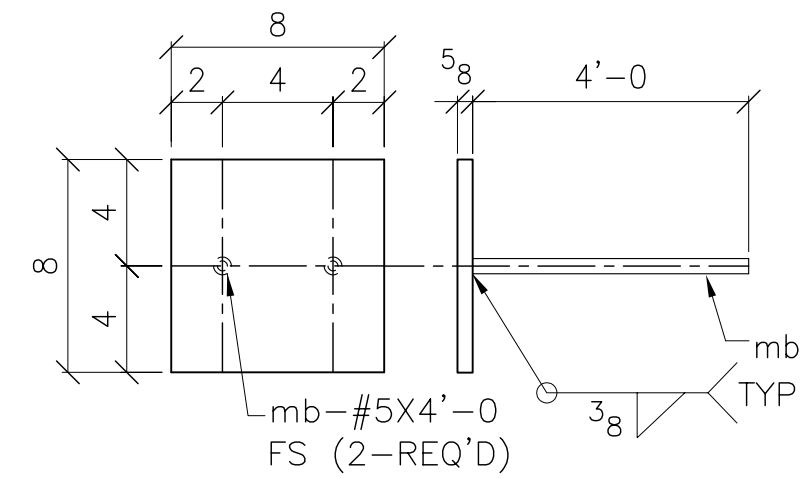
1B-R<sup>1</sup>1x8x0'-10-49 REQ'D



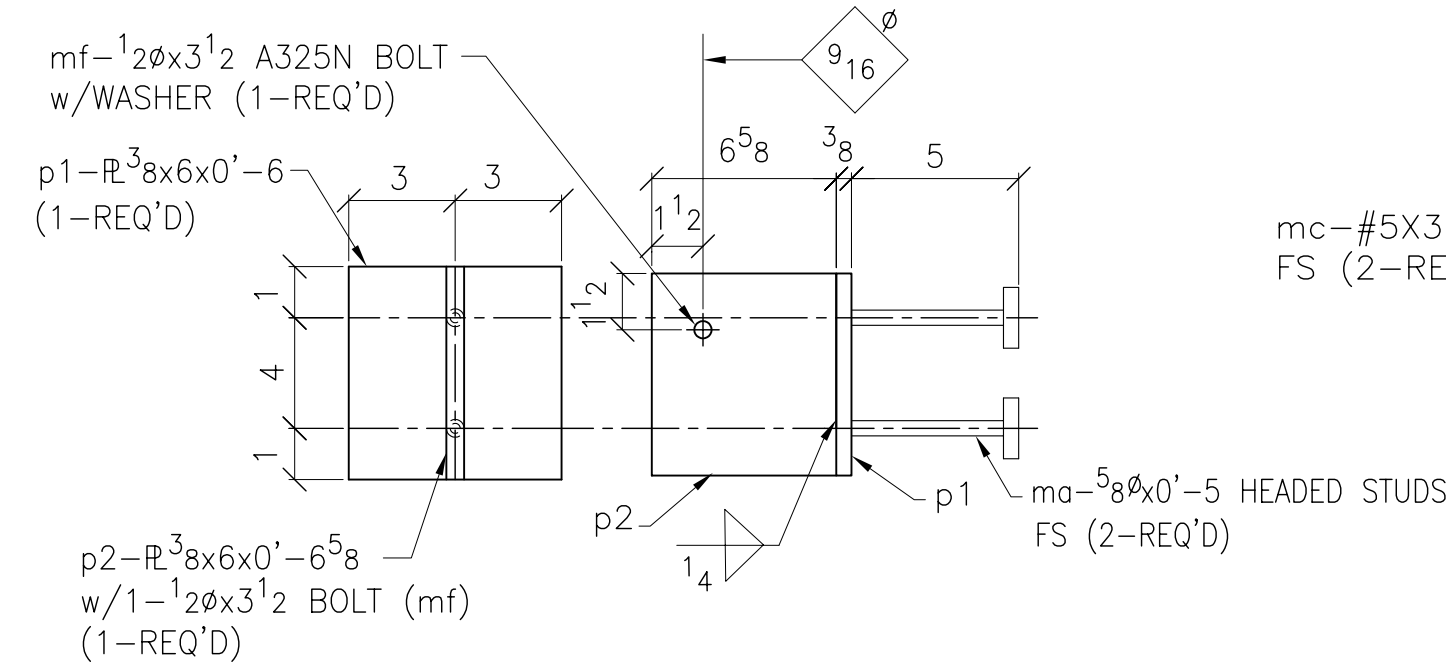
1C-R<sup>5</sup>8x6x0'-6-ONE REQ'D



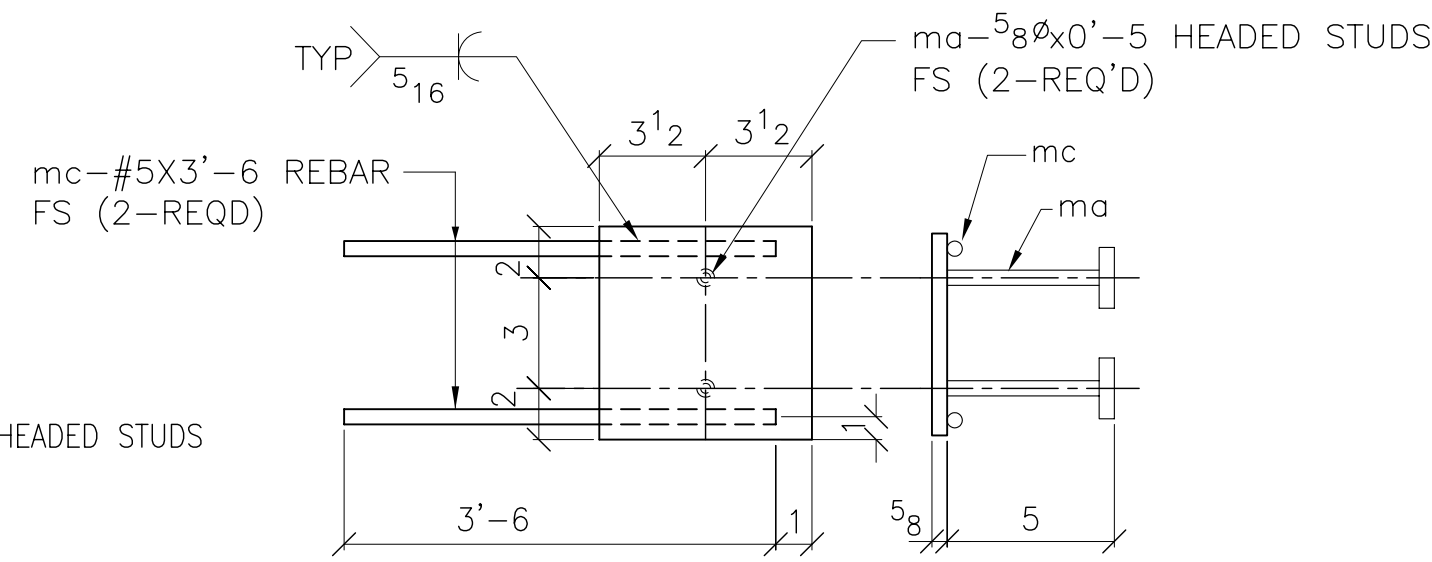
1D-R<sup>3</sup>8x12x1'-0-ONE REQ'D



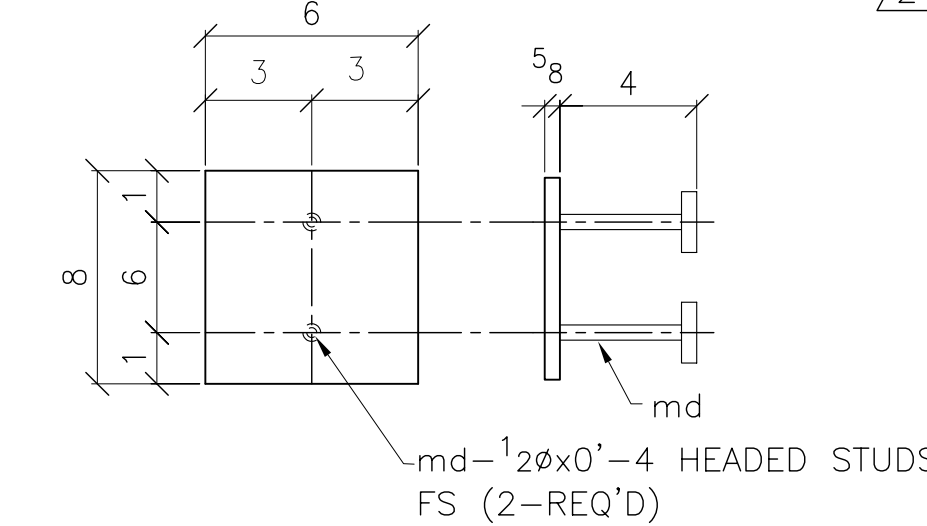
1F-R<sup>5</sup>8x8x0'-8-2 REQ'D



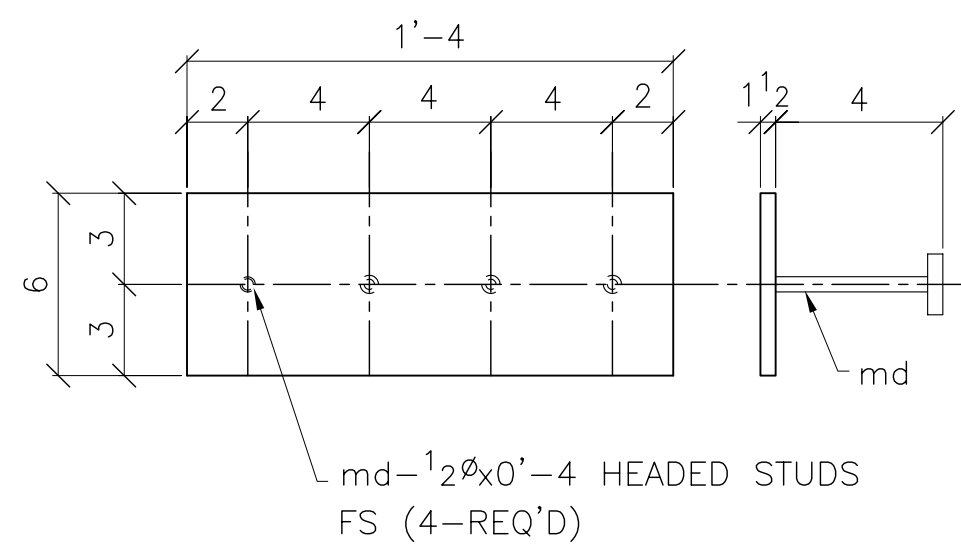
1G-EMBED R ASSEMBLY-9 REQ'D



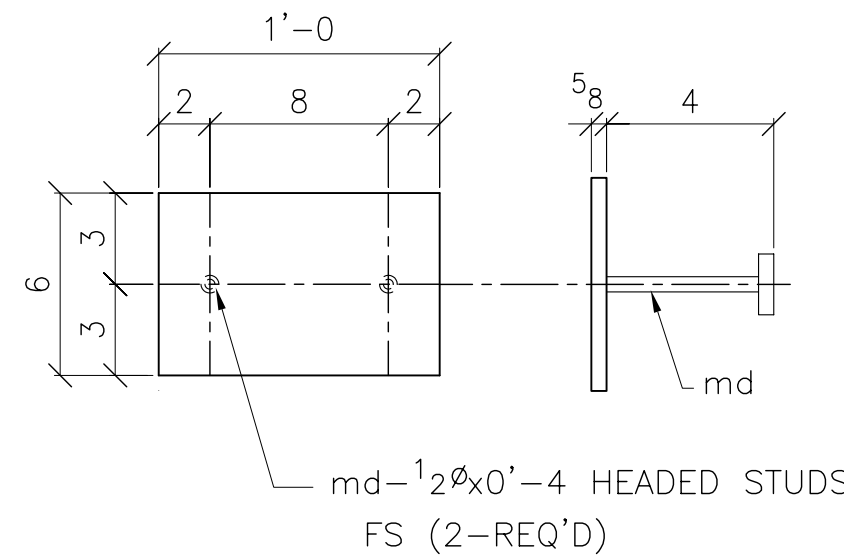
1H-R<sup>5</sup>8x7x0'-7-3 REQ'D



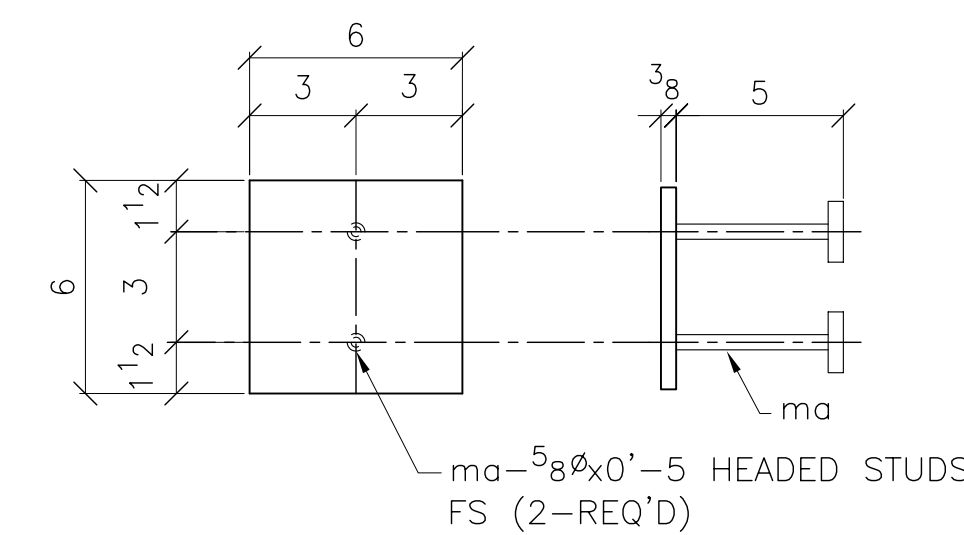
1J-R<sup>5</sup>8x6x0'-8-13 REQ'D



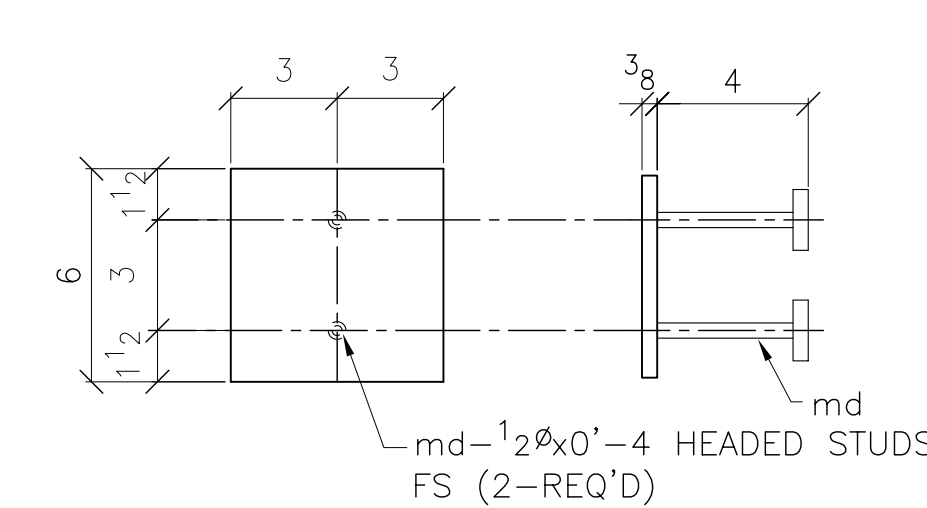
1K-R<sup>1</sup>2x6x1'-4-ONE REQ'D



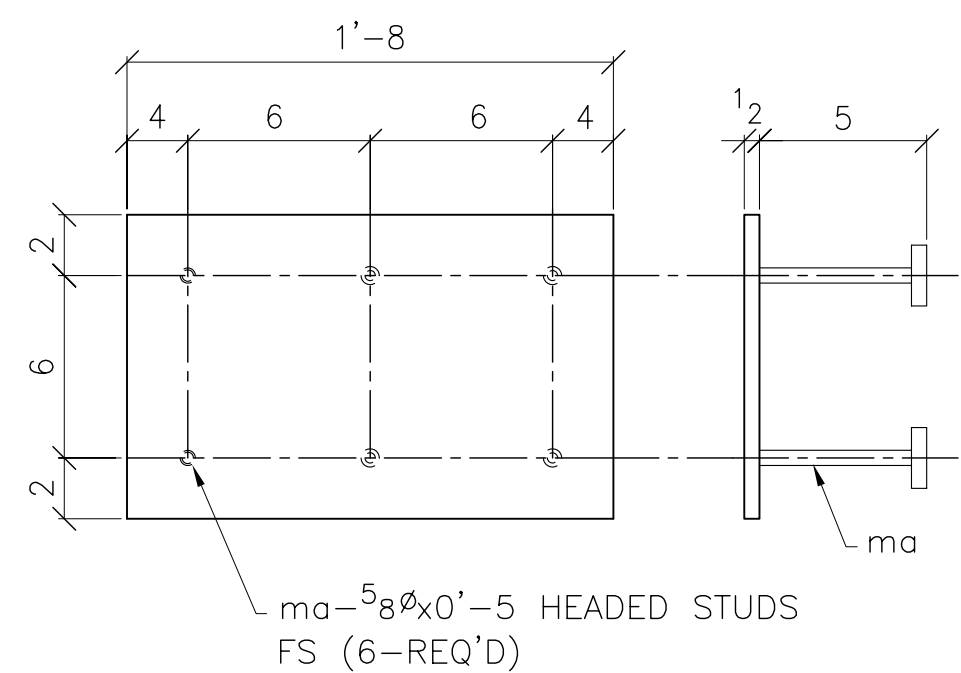
1L-R<sup>5</sup>8x6x1'-0-7 REQ'D



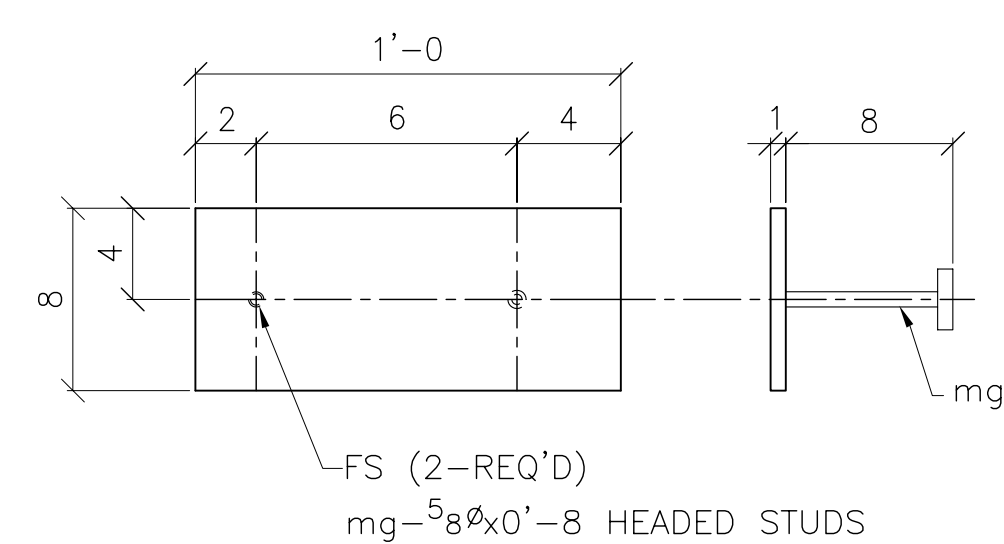
1M-R<sup>3</sup>8x6x0'-6-65 REQ'D



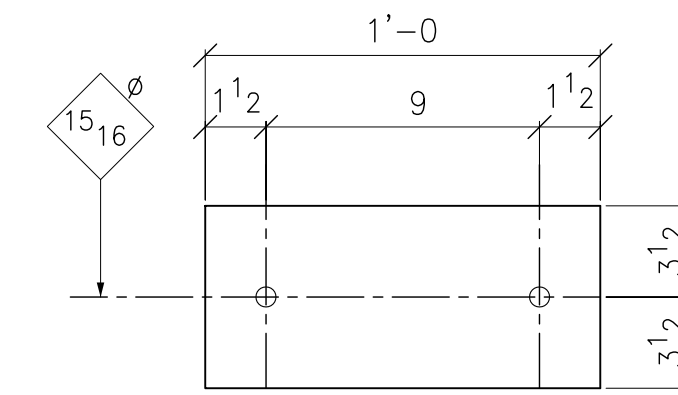
1N-R<sup>3</sup>8x6x0'-6-11 REQ'D



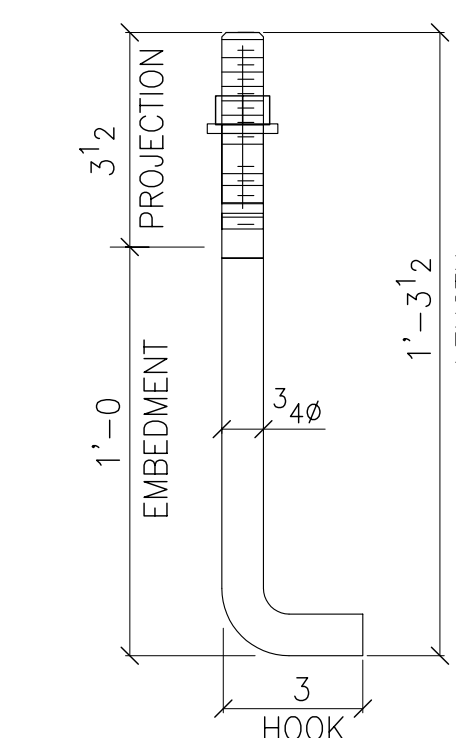
1P-R<sup>1</sup>2x10x1'-8-3 REQ'D



1Q-R<sup>1</sup>1x8x1'-0-ONE REQ'D



1R-R<sup>3</sup>4x7x1'-0-2 REQ'D



1AB1-3/4x1'-6 1/2-4 REQ'D

BILL OF MATERIALS							
QTY	SHIP MRK	PCS MRK	MATERIALS	FT	IN	REV	REMARKS
2	1A		R <sup>1</sup> 2x8	0	8		
8		ma	5/8 HEADED STUDS	0	5		
49	1B		R <sup>1</sup> 1x8	0	10		
196		mb	#5 REBAR	4	0		A706
ONE	1C		R <sup>5</sup> 8x6	0	6		
2		ma	5/8 HEADED STUDS	0	5		
ONE	1D		R <sup>3</sup> 8x12	1	0		
4		ma	5/8 HEADED STUDS	0	5		
2	1F		R <sup>5</sup> 8x8	0	8		
4		mb	#5 REBAR	4	0		A706
9	1G		EMBED R ASSEMBLY				
9		p1	R <sup>3</sup> 8x6	0	6		
9		p2	R <sup>3</sup> 8x6	0	6 5/8		
18		ma	5/8 HEADED STUDS	0	5		
9		mf	1/2 A325N BOLT w/WASHER	0	3 1/2		
3	1H		R <sup>5</sup> 8x7	0	7		
6		ma	5/8 HEADED STUDS	0	5		
6		mc	#5 REBAR	3	6		A706
13	1J		R <sup>5</sup> 8x6	0	8		
26		md	1/2 HEADED STUDS	0	4		
ONE	1K		R <sup>1</sup> 2x6	1	4		
4		md	1/2 HEADED STUDS	0	4		
7	1L		R <sup>5</sup> 8x6	1	0		
14		md	1/2 HEADED STUDS	0	4		
65	1M		R <sup>3</sup> 8x6	0	6		
130		ma	5/8 HEADED STUDS	0	5		
11	1N		R <sup>3</sup> 8x6	0	6		
22		md	1/2 HEADED STUDS	0	4		
3	1P		R <sup>1</sup> 2x10	1	8		
18		ma	5/8 HEADED STUDS	0	5		
ONE	1Q		R <sup>1</sup> 1x8	1	0		
2		mg	5/8 HEADED STUDS	0	8		
2	1R		R <sup>3</sup> 4x7	1	0		
4	1AB1		3/4 ANCHOR BOLT	1	6 1/2		

DATE	NO	REVISION/DESCRIPTION	IC
03/05/02	2	GENERAL REVISION	IC
02/27/02	1	PER APPROVAL	IC

**SHOP NOTES:-**

- ALL STEEL SHALL BE ASTM A 36 UNO
- WELDING ELECTRODES E70XX
- 3/16 ALL ROUND FILLET WELD-HS/REBAR TO EMBED R UNO
- REFERENCE DRG E1, E3 & E4

CLEAN: SSPC-SP 6 PRIMER: STD SHOP

THESE DRAWINGS ARE TO THE BEST INTERPRETATION OF THE CONTRACT DRAWINGS, THEREFORE ANY ERRORS ON THE ORIGINAL DRAWINGS ARE NOT THE FAULT OF THE DETAILER OR STEEL FABRICATOR. IT IS THE RESPONSIBILITY OF THE APPROVER(S) TO VERIFY AND CORRECT ANY DIMENSIONS, MATERIALS, AND SECTION VIEWS. IF DIMENSIONS AND MATERIALS ARE NOT CORRECTED IN THE APPROVAL PROCESS, WE ASSUME THEY ARE CORRECT AND ACCURATE AND ARE NOT LIABLE FOR ANY EXPENSE FOR CORRECTIONS THEREAFTER.

PROJECT:	LUTHERAN CHURCH		
LOCATION:	CENTER OF COMPASSION LUTHERAN CHURCH		
TITLE:	EMBED DETAILS		
FOR APPROVAL DATE 01-16-02	FOR CONST. AS NOTED _____	FOR CONST. DATE 02-27-02	SHEET # 1